



● Easiest: 0-1 hour

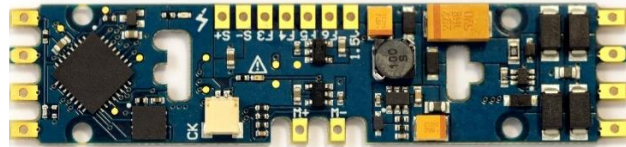
# Athearn® Genesis® SD60I-SD60M

To add a SoundTraxx Tsunami2 Digital Sound Decoder to your non-sound SD60I or SD60M model (announced in October 2007), you'll want to install a TSU-PNP EMD decoder.



Since 2009, Athearn has provided the option of purchasing some of their models equipped with Tsunami sound. If you have an SD60I or SD60M model without sound that you would like to upgrade, purchase SoundTraxx P.N. 885013. This board is designed to simply replace the factory PCB that supplies power to the locomotive. **You can complete the installation in an hour or less with no modification required to the model!**

## Tsunami<sup>2</sup> The Sound Upgrade



SoundTraxx Sound Decoder	TSU-PNP, P.N. 885013	\$109.95
SoundTraxx Speakers	28mm Round Speaker, P.N. 810153	\$11.95
SoundTraxx Accessories	28mm Speaker Gasket Kit, P.N. 810119	\$5.00
	30-gauge Wire, Purple, P.N. 810144	\$4.95
	<b>Total</b> (MSRP)	<b>\$131.85</b>

### Other Tools & Supplies You Will Need

- 25-watt Soldering Iron
- Rosin Core Solder
- Wire Strippers
- Wire Cutters
- X-ACTO® Knife
- Miniature Screwdriver Set
- Kapton Tape
- Small Pliers

**Notice**  
SoundTraxx (Throttle Up!) shall not be liable for technical or editorial errors or omissions contained herein; nor for incidental or consequential damages resulting from the furnishing, performance or use of this material. This document contains information protected by copyright. No part of this document may be photocopied or reproduced in any form without the prior written consent of Throttle Up! Corp.