



● Easiest: 0-1 hour

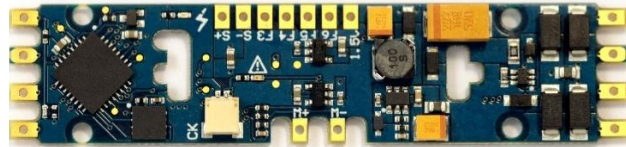
Athearn® Genesis® SD70ACe

To add a SoundTraxx Tsunami2 Digital Sound Decoder to your non-sound SD70ACe model (announced in January 2010), you'll want to install a TSU-PNP EMD decoder.



Since 2009, Athearn has provided the option of purchasing some of their models equipped with Tsunami sound. If you have an SD70ACe model without sound that you would like to upgrade, purchase SoundTraxx P.N. 885013. This board is designed to simply replace the factory PCB that supplies power to the locomotive. **You can complete the installation in an hour or less with no modification required to the model!**

Tsunami2™ The Sound Upgrade



SoundTraxx Sound Decoder
SoundTraxx Speakers
SoundTraxx Accessories

TSU-PNP, P.N. 885013	\$109.95
28mm Round Speaker, P.N. 810153	\$11.95
28mm Speaker Gasket Kit, P.N. 810119	\$5.00
30-gauge Wire, Purple, P.N. 810144	\$4.95

Total	\$131.85
(MSRP)	

Other Tools You Will Need

- 25-watt Soldering Iron
- Rosin Core Solder
- Wire Strippers
- Wire Cutters
- X-ACTO® Knife
- Miniature Screwdriver Set
- Kapton Tape
- Small Pliers

Notice

SoundTraxx (Throttle Up!) shall not be liable for technical or editorial errors or omissions contained herein; nor for incidental or consequential damages resulting from the furnishing, performance or use of this material. This document contains information protected by copyright. No part of this document may be photocopied or reproduced in any form without the prior written consent of Throttle Up! Corp.