

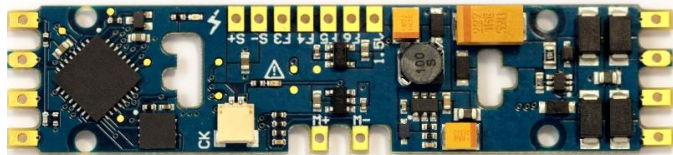
Athearn® Ready To Roll® SW 1000 & SW 1500

To add a SoundTraxx Tsunami2 Digital Sound Decoder to your non-sound SW 1000 or SW 1500 model (announced in March 2008), you'll want to install a TSU-PNP EMD decoder.



Since 2009, Athearn has provided the option of purchasing some of their models equipped with Tsunami sound. If you have an SW 1000 or SW 1500 model without sound that you would like to upgrade, purchase SoundTraxx P.N. 885013. This board is designed to simply replace the factory PCB that supplies power to the locomotive. **This installation is labor intensive, requires cutting the frame, and could take several hours. It is not for the beginner.**

Tsunami² The Sound Upgrade



SoundTraxx Sound Decoder	TSU-PNP, P.N. 885013	\$109.95
SoundTraxx Speakers	16 x 35mm Oval Speaker, P.N. 810113	\$14.50
SoundTraxx Accessories	30-gauge Wire, Purple, P.N. 810144	\$4.95
	Total (MSRP)	\$129.40

Other Tools & Supplies You Will Need

- 0.75mm Sheet Styrene
- 1.00 x 2mm Strip Styrene
- 1.00 x 1.5mm Strip Styrene
- 25-watt Soldering Iron
- Rosin Core Solder
- Wire Strippers
- Wire Cutters
- X-ACTO® Knife
- Metal Straight Edge
- Dial Calipers
- Miniature Screwdriver Set
- Aquarium Sealant/Silicone
- Liquid Plastic Cement (TENAX-7R™ or equivalent)
- Kapton Tape
- Small Pliers
- Insulative Electrical Tape

Notice

SoundTraxx (Throttle Up!) shall not be liable for technical or editorial errors or omissions contained herein; nor for incidental or consequential damages resulting from the furnishing, performance or use of this material. This document contains information protected by copyright. No part of this document may be photocopied or reproduced in any form without the prior written consent of Throttle Up! Corp.